

SUNPRIME[≈]
C-LOUNGE

**SÜRDÜRÜLEBİLİRLİK
EL KİTABI**

**SUSTAINABILITY
MANUAL**

ARALIK 2023

THE REPUBLIC OF TURKIYE



FOUNDATION OF THE REPUBLIC OF TURKIYE

After the National War of Independence, which started on May 19, 1919, the First Grand National Assembly of Turkey convened on April 23, 1920, under the leadership of Mustafa Kemal Atatürk. With the adoption of the first constitution on January 20, 1921, "Sovereignty belongs to the nation unconditionally. "Executive and legislative authority is concentrated in the Turkish Grand National Assembly on behalf of the Turkish nation." On the first anniversary of the opening of the Turkish Grand National Assembly on April 23, 1921, April 23 was declared a national holiday with Law No. 112. The Republic was declared on October 29, 1923.

MUSTAFA KEMAL ATATÜRK

(1881-1938)



ATATÜRK, FOUNDER AND FIRST PRESIDENT OF THE REPUBLIC OF TURKIYE

He was born in Thessaloniki in 1881. His mother is Zübeyde Hanım and his father is Ali Rıza Efendi. He went to the Mahalle School, Şemsi Efendi School, Thessaloniki Civil Junior High School, Thessaloniki Military Junior High School, Thessaloniki Military High School, the Military Academy and the Military Academy, respectively. While he was studying at the Military Middle School in 1893, "Kemal" was added to his name by his mathematics teacher and he took the name Mustafa Kemal. When the Ottoman Empire was defeated in World War I, the Armistice of Mudros was signed. Following the start of the occupation of the homeland in accordance with this agreement, Mustafa Kemal went to Samsun on May 19, 1919 and started the national struggle. Mustafa Kemal was elected as the President of the Parliament and Government with the opening of the Turkish Grand National Assembly on 23 April 1920. After winning the Battle of Sakarya, he was honored with the title of Gazi and the rank of Marshal. Mustafa Kemal became the first President of the Republic of Turkey with the proclamation of the republic on October 29, 1923.

SUNPRIME C-LOUNGE HOTEL



Our hotel opened its doors to our guests on May 7, 2015. We promise you a relaxing and refreshing stay with our 5-star and adults-only (16+) concept. Our hotel has a capacity of 164 rooms and 328 beds.

We will be serving as a non-smoking hotel as of 2023. Located in Alanya Oba, the pearl of the Mediterranean, our facility offers you sun, sea, comfort, modern architecture and Turkish hospitality at the highest level.

25 km from Alanya Gazipaşa airport, 150 km from Antalya airport, 5 km from Alanya city center and 500 m from Oba shopping centre. away.

Vision: To open more facilities with the same standards and to make our brand even stronger with the happiest guests and employees in the hospitality world.

Mission: To exceed the expectations of our guests by taking into account every detail with our dedicated team and to be the first choice for a comfortable and carefree holiday in an exclusive environment.

SUNPRIME C-LOUNGE HOTEL

OUR QUALITY, ENVIRONMENT AND FOOD SAFETY POLICY

Sunprime C-Lounge aims to be one of the first preferred hotels in its region with its increasing quality standards and continuous in-service training.

While achieving our goal, our first priority is to take environmental issues into account, reduce negative impacts on the environment, and raise environmental awareness by using resources carefully.

Our most important goal is to exceed the expectations of all our guests, including our disadvantaged guests, in an extremely comfortable and modern holiday environment with our people-oriented 'Happy team - happy guests' approach, to provide them with experiences that they will remember with a smile and to host them again.

In line with these objectives, our guest-oriented service approach, which we have created by constantly improving our processes and systems according to the requirements of the age, with the leadership and responsibility of the top management, with the voluntary participation of all our employees, has become established as a philosophy.

As a result, we based all our activities on the following principles;

- **To be responsible for quality together with all our managers and employees**
- **Working in compliance with legal and regulatory requirements**
- **Continuously monitoring our control points that we have determined to realize safe food production.**
- **Relying on the support and productivity of our employees**
- **To ensure access to contemporary quality values and customer satisfaction at every level of the service provided**
- **Acting according to the principle of "continuous improvement" in all work done**
Increasing our skills and quality awareness through training
Increasing family awareness by considering the happiness of our employees
- **Evaluating the performance of our suppliers and communicating with them in order to ensure the continuity of our product quality.**
- **Respecting and supporting society and the environment**
- **Organizing environmental activities, participating in activities, and inviting our guests to our work.**
- **To respect and support society and the environment for Sustainable Tourism.**

General Manager

MAP



Scan the QR code for Alanya Bus routes and times.

From Our Hotel

- Cable car 6 km
- Damlataş Cave 6 km
- Alanya Kızılkuşe 6 km
- Alanya Castle 8 km
- Dim Stream 16 km
- Sapadere Canyon 40 km
- Manavgat Waterfall 71 km
- Side Ancient City 74 km
- Aspendos Ancient Theater 102 km
- Antalya Kaleiçi 142 km

ALANYA CABLE CAR



ECOLOGICAL TRANSPORTATION

Alanya Cable Car offers "ecologically sensitive transportation" with its technology elegantly placed in nature. Great care is taken to protect the environment and consume natural resources economically at every stage of construction and operation. It contains all the advantages of ecological transportation vehicles. Designed to operate in all weather conditions, the Alanya Cable Car system can continue to operate uninterruptedly in conditions such as rain, wind and high temperature.

You can reach the city by taking buses from the stops on the main street in front of our hotel.

DAMLATAŞ CAVE



DAMLATAŞ CAVE

Damlataş Cave was found in 1948 during a quarry for stone to be used in the construction of the port. The cave is on the west coast of the historical peninsula. The stalactites and stalagmites of the cave, located in semi-crystallized limestone, were formed over 15 thousand years. The cave was named "Damlataş" because of the drops of water that continue to drip from the stalactites. Damlataş Cave, a favorite of local and foreign tourists, is famous for its enchanting beauty as well as its air that is good for asthma patients. The weather of the cave does not change in summer or winter; temperature is 22 degrees Celsius, humidity is 95 percent, constant pressure is 760 mm. The air of the cave contains 71 percent nitrogen, 20.5 percent oxygen, 2.5 parts per ten thousand carbon dioxide and some radioactivity and ions. Entrance to the cave is paid. There is a small market around it and the beach in front of it.

You can reach the city by taking buses from the stops on the main street in front of our hotel.

ALANYA KIZILKULE



ALANYA KIZILKULE

Kızıl Kule, a unique example of 13th century medieval Mediterranean defense structures; It was built by the construction master Ebu Ali Reha el Kettani from Aleppo by the Seljuk ruler Alaaddin Keykubat I in order to protect the port, shipyard and Alanya Castle against attacks from the sea. There is a four-line construction inscription on the outer northern wall of the building, written in the name of Alaaddin Keykubat, 10 meters above the ground, stating "gratitude to God" and the date of construction as April 1226, and another construction inscription on the southern wall. Kızıl Kule, which has an octagonal plan, has a complex plan inside, contrary to its simple exterior. Red Tower; It has five floors: ground floor, first floor, mezzanine floor, open floor and open terrace.

You can reach the city by taking buses from the stops on the main street in front of our hotel.

ALANYA CASTLE



Alanya Castle is a castle that is one of the symbols of Alanya, the district of Antalya. It is located on a peninsula rising approximately 250 meters above the sea. The total length of its walls is 6.5 kilometers. The castle was built in the Alanya settlement, which was called Kandeleri in ancient times, during the Hellenistic period. The history of the castle, whose current historical texture is a 13th-century Seljuk work, dates back to the Hellenistic period. The castle was built by the Seljuk Sultan Alaeddin Keykubat I, who took the city and rebuilt it in 1221.

You can reach the city by taking buses from the stops on the main street in front of our hotel.

DİMÇAYI



DİMÇAYI

The stream originating from the Taurus Mountains follows a course of approximately 60 kilometers. Its water is cold in summer and winter, making it an ideal place for those who want to escape the sweltering heat of the Mediterranean, especially in summer. There are many restaurants and tea gardens opening parallel to the road. These restaurants continue after the regulator, which is approximately 7-8 kilometers away from the main road. A common feature of the restaurants and picnic areas here is the tables placed in tea. The upper parts of the stream are used for rafting purposes.

Transportation is provided by taking the buses marked Dimçayı from the stops on the main street in front of our hotel.

SAPADERE KANYONU



Located between the fierce Taurus Mountains, the canyon is surrounded by high mountains on three sides and is 750 meters long. Located 400 meters above sea level, the canyon is surrounded by karst rocks with an average width of 10-15 meters and a circumference of 150-200 meters. Since its water comes from the rocks of the Taurus Mountains, it is cold and has plenty of oxygen.

The canyon, which was opened in 2008, was built on steel construction with wooden platform walking paths for easy navigation, and some areas were protected with wire for security. The walk, which starts with a slight incline from the entrance of the canyon, becomes more enjoyable with 10-15 degree ramps from time to time.

Transportation is provided by taking city buses from the stops on the main street in front of our hotel. Continue by taxi. Public transportation does not go to this area.

SIDE ANCIENT CITY



Side ancient city BC. It is among the most important settlements in history, founded in the 7th century. This historical city, which belongs to the Pamphylia region, entered the first empire of the Lydian Kingdom and remained under this reign for many years. The ancient city of Side, which later transitioned to the Persian Kingdom, passed to the King of Macedonia when Alexander the Great requested the region.

You can go to the bus station from the stops on the main street in front of our hotel, take Manavgat buses from the bus station, and take Side minibuses from the city center.

ASPENDOS ANCIENT THEATER



Aspendos is famous for having the best-preserved Roman Period theater not only in Anatolia but in the entire Mediterranean world. The city was founded on the hill plain near one of the largest rivers of the region, Köprüçay (Ancient Eurymedon). In Aspendos, which owes its transportation and development with the Mediterranean to the nearby river and therefore the fertile lands around it, today theaters and waterways are mostly visited.

You can go to the bus station from the stops on the main street in front of our hotel, and from the bus station you can take Antalya buses and go to Serik. From here, transportation is provided by minibuses to Aspendos.

MANAVGAT WATERFALL



Manavgat Waterfall

It is a waterfall located on the Manavgat River in the Manavgat district of Antalya. Although it pours from a low height, it flows over a wide area with a high flow rate.

You can go to the bus station from the stops on the main street in front of our hotel, take Antalya buses from the bus station and get off in Manavgat.

ANTALYA KALEİÇİ



Antalya Kaleiçi is protected by two thick horseshoe-shaped walls. One of these rampart-shaped walls is in the seaside bay, the other is on the land side. In addition to these walls, there are also walls separating various settlements from each other, and there is a tower approximately every fifty steps on the outer walls. Narrow streets within the walls extend along the wall from the port upwards. Yivli Minaret, Keyhüsrev Madrasa, Karatay Madrasa, İskele Mosque, Tekeli Mahmut Pasha Mosque are just some of the important historical monuments within the city walls.

You can go to the bus station from the stops on the main street in front of our hotel, take Antalya buses from the bus station and reach the Castle with Antalya city buses.

HADRIAN'S GATE



It is one of the best preserved historical buildings in Antalya. The building, which is a Roman work, was built in 130 AD in the name of Roman Emperor Hadrian. Over time, the city walls closed the outer part of the gate and the gate was not used for many years. Perhaps this is one of the reasons why the work has survived until today without being destroyed. The gate was unearthed after the ruins of the city walls were demolished. It is considered the most beautiful gate of Pamphylia. There are three dome-shaped openings at the top. It is made entirely of white marble, except for its columns. The carvings and relief decorations are very beautiful.

You can go to the bus station from the stops on the main street in front of our hotel, take Antalya buses from the bus station and reach the Castle by city buses.

HOW TO GO?

ALANYA İSKELE – KIZILKULE

You can take the city buses that pass in front of our hotel and get off in the city center. If you want to walk, it is a 1-hour walk away.

ALANYA CASTLE

You can take the city buses that pass in front of our hotel and get off in the city center. It can be reached by buses to the Castle or by cable car from Damlataş. You can also go to the Castle by walking for 1 hour from the center.

MANAVGAT - SIDE

You can reach the bus station with the buses passing from the main street in front of our hotel. You can reach Manavgat and Side center in 1.5 hours by Antalya buses.

ANTALYA

You can reach the bus station by buses passing from the main street in front of our hotel. Antalya buses take you to the center of Antalya in 2.5 hours.

AIRPORT

Our hotel guests can reach Antalya airport in 2 hours with the transfer vehicles of their own agencies.

Our hotel guests can reach Gazipaşa airport in 30 minutes with the transfer vehicles of their own agencies..

ALANYUM

They can reach Alanyum shopping center by taking the city buses that pass in front of our hotel.

*** In settlements, public transportation is provided by Supervised City Minibuses for a fee or by using city cards for Municipal Buses.

*** If they wish, our guests can benefit from the taxi service at the taxi stands near our hotel.

NEIGHBORHOOD MARKETS

THURSDAY TOSMUR MARKET

A vegetable, fruit and textile market is held in front of our hotel every Thursday.



ALANYA DISTRICT MARKETS

You can get detailed information about other neighborhood markets in Alanya by scanning the QR code.

CULTURAL INFORMATION



TURKISH TEA

A type of black tea is produced in Turkey and grows along the Eastern Black Sea coast. This type of tea is also called "Turkish tea" among the public. It is brewed with powdered roasted black tea and served in unique small glasses known as "ince waist".

CULTURAL INFORMATION



TURKISH COFFEE

Turkish coffee is one of the oldest coffee preparation and cooking methods that has survived from the Ottoman Empire to the present day, which has an important place in Turkish culture. It has a unique identity and tradition with its unique taste, foam, smell and presentation style. It is the only type of coffee served with grounds.

As of 2013, Turkish coffee culture and tradition was recorded on the UNESCO Representative List of the Intangible Cultural Heritage of Humanity on behalf of our country.

CULTURAL INFORMATION



AYRAN

It is a type of drink obtained by adding water to yoghurt. It is one of the most common drinks belonging to Turkish cuisine.

Göktürks, who ruled between 552-745 AD, added water to yoghurt to reduce its sourness. Thus, ayran came into being by chance.

The word ayran was defined for the first time in history as "a drink obtained from milk" in the work Divan-ı Lügat-it Türk.

CULTURAL INFORMATION



GÖZLEME

Flatbread is a type of appetizer Turkish pastry prepared by filling thinly rolled dough with various filling ingredients and then baking it on a sheet metal over a wood fire.

"Közmen", which means bread cooked on embers during the Seljuk period, is one of the first expressions used to mean flatbread. Over time, due to the evolution of the spoken language and the changing local dialects, it has changed and taken the name of gözleme.

CULTURAL INFORMATION



TURKISH BATH

There has been a bath culture in Anatolia since ancient times. Turks carried their bath traditions, which existed when they lived in Central Asia, to Anatolia, where they migrated. They placed their own traditions on the marble bath culture left by those who lived before them. Over time, baths became places where very special days were celebrated. For women, which continues even today, there are "bridal baths", "puerperal baths", "baby's forty baths", "votive baths", "mourning baths" and "groom's baths", "circumcision baths", "soldier baths" and "baths for men". Eid Hammam" continues to be up-to-date.

CULTURAL INFORMATION



HACIVAT KARAGÖZ

Karagöz and Hacivat is a shadow play performed on a screen with two-dimensional depictions, based on imitation and mutual conversation. Karagöz actor is called fictional, imaginary. Change the conversation in the game is done with head movements. It is not known for certain whether these two characters actually lived or not, and if so, where and how they lived. What is told is based on rumors, because even if they really lived, they probably did not find it important enough to be included in the history books during the mentioned period.

CULTURAL AND NATURAL HERITAGE



CARETTA CARETTA

Caretta caretta, which never come to land except to lay eggs, are in the category of endangered creatures. Loggerhead sea turtle (Caretta caretta) and green sea turtle (Chelonia mydas) species lay eggs on the Mediterranean coast of Turkey. According to the results of studies carried out in the Mediterranean from past to present, the most important nesting areas of the Caretta caretta species are Turkey and Greece.

ENDEMIC ANIMAL SPECIES



SEA TURTLE
Caretta Caretta



ANATOLIAN PARS
Pantera pardus tuttiana



ANATOLIAN MIFLOON
Ovis orientalis anatolica



GELENGİ
Citellus citellus



HOPA VIPER
Vipera kaznakovi



STEP LYNX
Felis caraca

CULTURAL AND NATURAL HERITAGE



SAND LILY (*Pancratium maritimum*)

Sand lily is a perennial, bulbous plant species belonging to the Amaryllidaceae family and growing especially in Mediterranean dunes. Its homeland is the Mediterranean region. It is an endemic plant species. In our country, criminal sanctions are imposed on those who damage this plant.

Sand lilies are generally seen in areas a few meters away from the sea. It does not shed its leaves, which resemble long spears coming from the bottom and can reach 40 cm in length, in winter. Flowering time is between August and October.

ENDEMIC PLANT SPECIES



SAND LILY

Pancratium maritimum



TAURUS ORCHID

Himantoglossum Montis-tauri



BAYTOP ÇİĞDEMİ

Colchicum Baytopiorum



PHASELIS BRANCH

Lathyrus Phalitanus



SİDE MONSTER WEED

Orobanche Sideana



PERGE AIR MERCURY

Alkanra Macrophilla

THINGS TO CONSIDER WHEN VISITING LOCAL, HISTORICAL, ARCHAEOLOGICAL, CULTURAL, SPIRITUAL PLACES

Please do not participate in tourist activities that involve animal abuse.

Please do not choose ornaments, accessories or clothing made from animal products.

Please let's be environmentally conscious in travel areas.

In our country, cigarettes and alcoholic beverages are not sold to children under the age of 18.

In all areas except the beach, swimsuits are not allowed, clothes are worn.

Do not take photos of children or touch children without permission from their families.

Before entering sacred areas such as mosques, shoes are removed and women cover their hair with a veil.

FOR OUR ENVIRONMENT



Our precious guests,

Choosing products that do not harm nature when it comes to the sprays, deodorants, perfumes, sunscreens and fly repellents you use for your personal care is the best investment for a sustainable environment.

EXPERIENCE THE LOCAL CULTURE



TURKISH NIGHT

All special flavors of Alanya are presented at the "Turkish Night" held once a week in our hotel and Turkish Culinary Culture is introduced to our guests.

EXPERIENCE THE LOCAL CULTURE



TURKISH NIGHT

All special flavors of Alanya are presented at the "Turkish Night" held once a week in our hotel and Turkish Culinary Culture is introduced to our guests.

SUNPRIME™

C-LOUNGE

ÇEVREMİZİ KORUMAK İÇİN To Protect Our Environment



Consume less electricity !
Turn off and unplug unnecessary working devices.



Research it!
Find out where and how a food you eat is produced.



Change your habits!
Use cloth bags instead of Plastic bags.



Notice them!
Put a bowl of water outside for street animals.



Less water Consumption
Do not leave the water on all the time while brushing your teeth and washing your hands.



Observe it!
your disposables and use them less.

SUNPRIME[™]

C-LOUNGE

ÇEVREMİZİ KORUMAK İÇİN To Protect Our Environment

Yenileyin!

Kırılmış ya da bozulmuş eşyalarınızın yerine yenisini almadan önce onları tamir etmeye çalışın.



Refresh it!

Before you buy a new one for your broken or damaged items, try to fix them.

Geri Dönüştürün!

Aşklarınızı uygun geri dönüşüm kutularına atın.



Recycle it!

Dispose of your waste in appropriate recycling bins.

Fidan Dikini!

Bir ağaç tohumunu çimlendirin ve büyüttüğünüz fidanı toprağa dikin.



Plant saplings !

germinate a tree seed and plant the seedling you have grown into the ground.

Kullanmayın!

Tek kullanımlık plastik pipetleri kullanmayın.



Do not use!

Do not use disposable plastic straws.

Doğaya Saygı Duyun!

Daha az kâğıt kullanın. Kâğıtların iki tarafını da kullanın.



Respect nature!

use less paper. Use both sides of the paper.

Paylaşın!

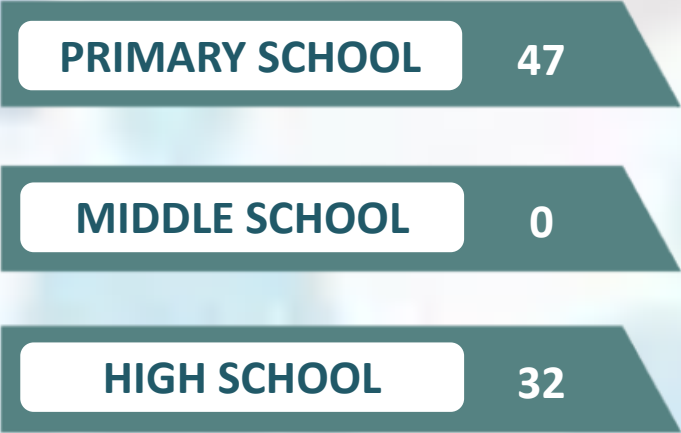
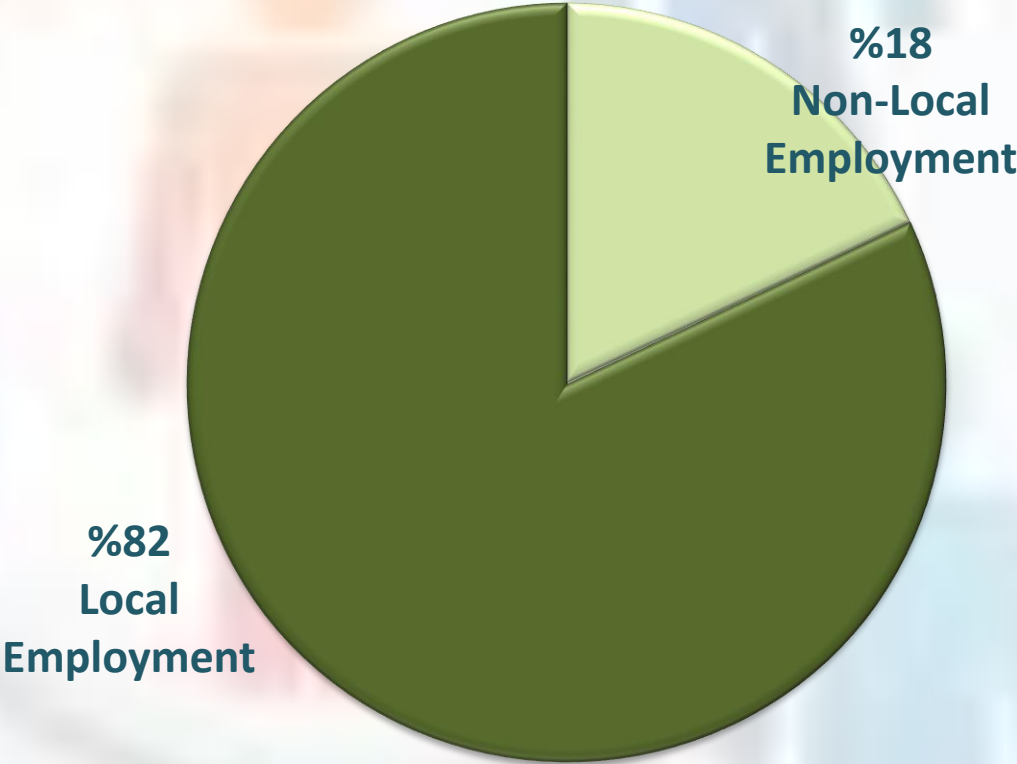
Kullanmadığınız giysileri giysi toplama kutularına bırakın ya da başkalarıyla paylaşın.



Share it!

leave unused clothes in the clothes collection boxes or share them with others.

HUMAN RESOURCES



OPPORTUNITIES OFFERED TO STAFF



Lodging Opportunity :

Lodging is allocated to our staff. There are facilities in the lodgings to meet their personal needs.

Meal Opportunity:

Meals are served for our staff in the staff cafeteria.



Health Service Opportunity :

Our employees can receive discounted examinations at the private hospital we have a contract with.

Laundry Facility:

The uniforms of all our employees are washed in our hotel. Those staying in the lodge can use the washing machine in the lodge.



ENERGY-SAVING



98% LED lights are used in the lighting of our facility. The goal is to have 100% LED lighting.

All rooms have a system that disables heating/cooling devices when the balcony door is opened.



We prefer energy efficient, environmentally friendly devices and technologies.

Illuminators with motion-sensitive sensors are used in general areas and personnel areas.



General areas are designed to benefit from daylight to save energy.

ENERGY-SAVING



Outdoor lighting is controlled by timers.

Electronic energy cards are used in all rooms.



LED televisions are used in our rooms.
Minibars are positioned away from the heat source to save energy.

The use of air conditioning devices is reduced by keeping the curtains of empty rooms closed in summer and open in winter.



Energy losses are minimized by performing periodic maintenance and cleaning of all electronic devices.

ENERGY-SAVING



We have 160 solar panels to benefit from solar energy. We provide 30% energy savings in the water heating system.

Tires of cold rooms, deep milling machines and refrigerators are checked and worn ones are replaced to prevent energy losses.



Dishwashers, washing machines and dryers should not be operated unless they are fully loaded.

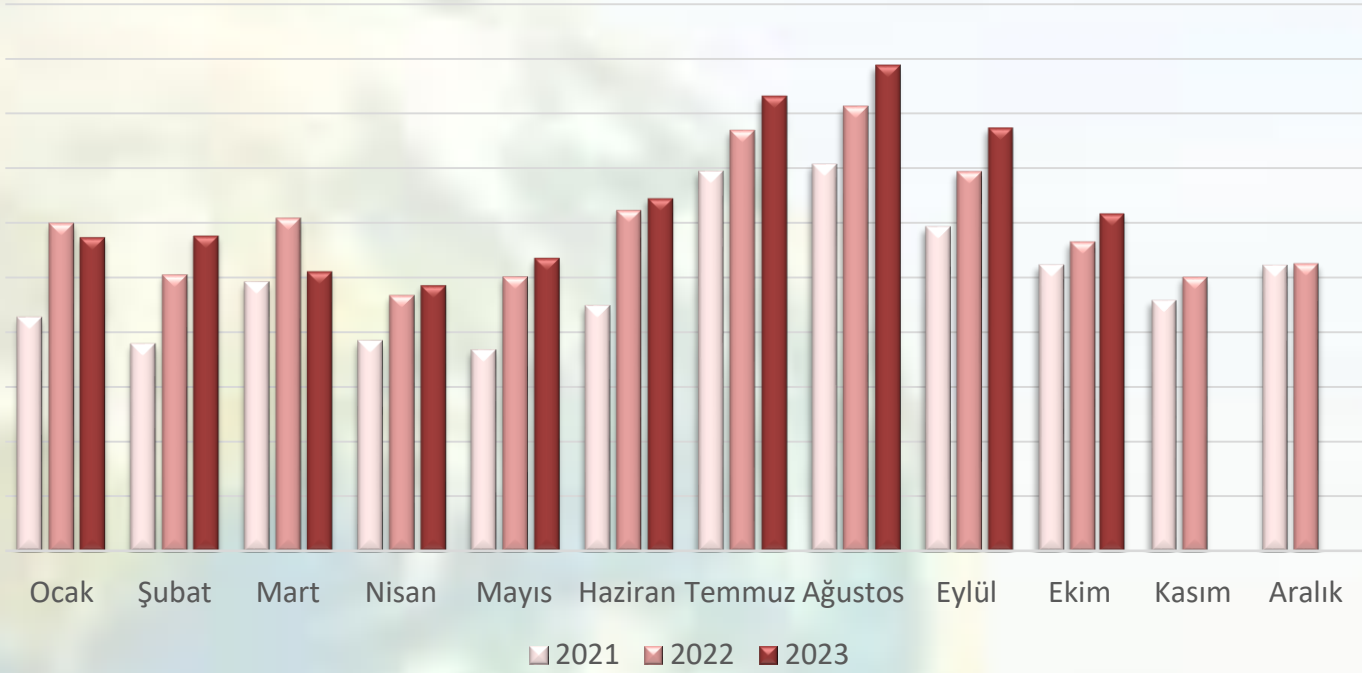
Our monthly and annual energy consumption is recorded and monitored.



Our staff is given training on savings measures, and our guests are informed about our savings practices.

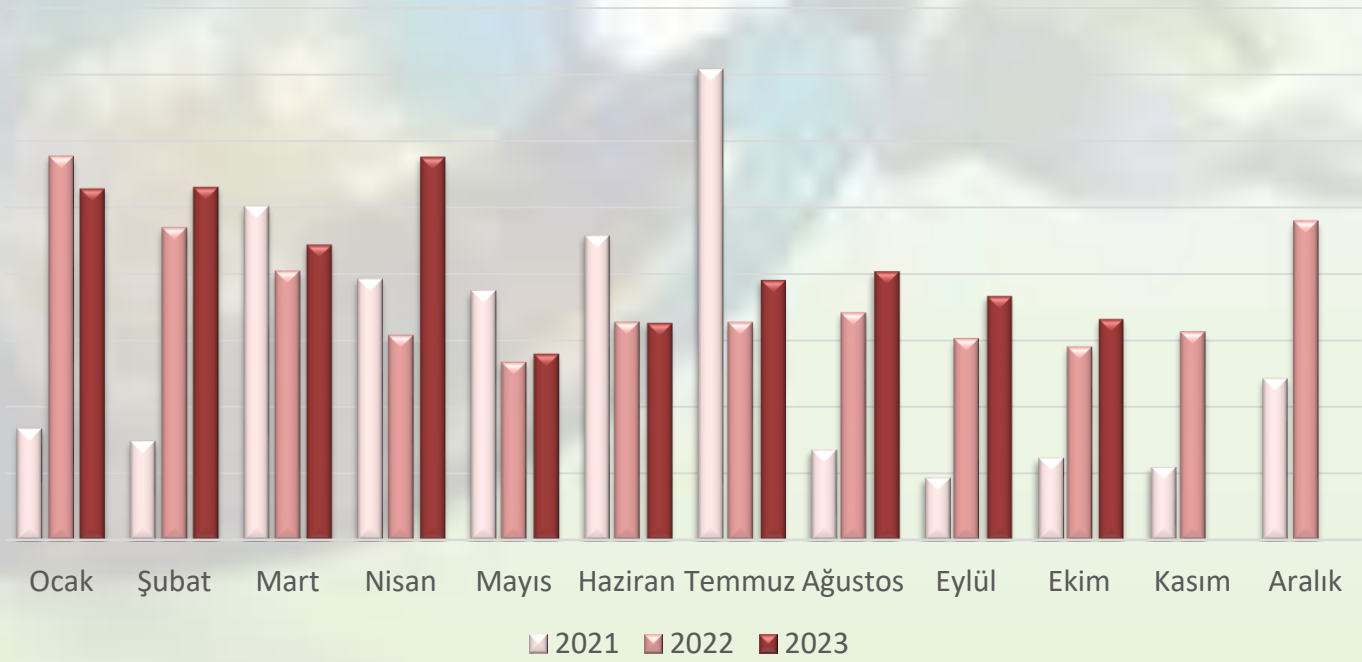
ENERGY-SAVING - ELECTRIC

Electricity Consumption kWh



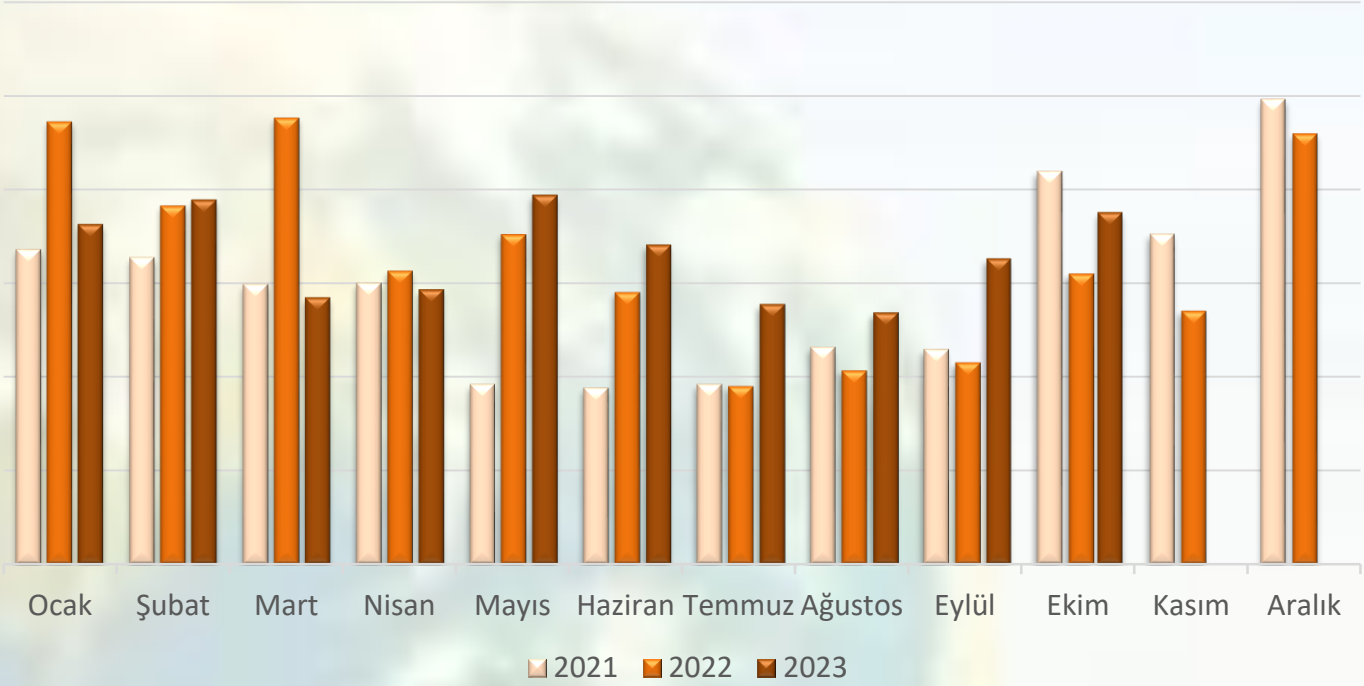
We aimed to save 1% electricity for 2023 compared to the previous year.

Electricity Consumption per Person kWh



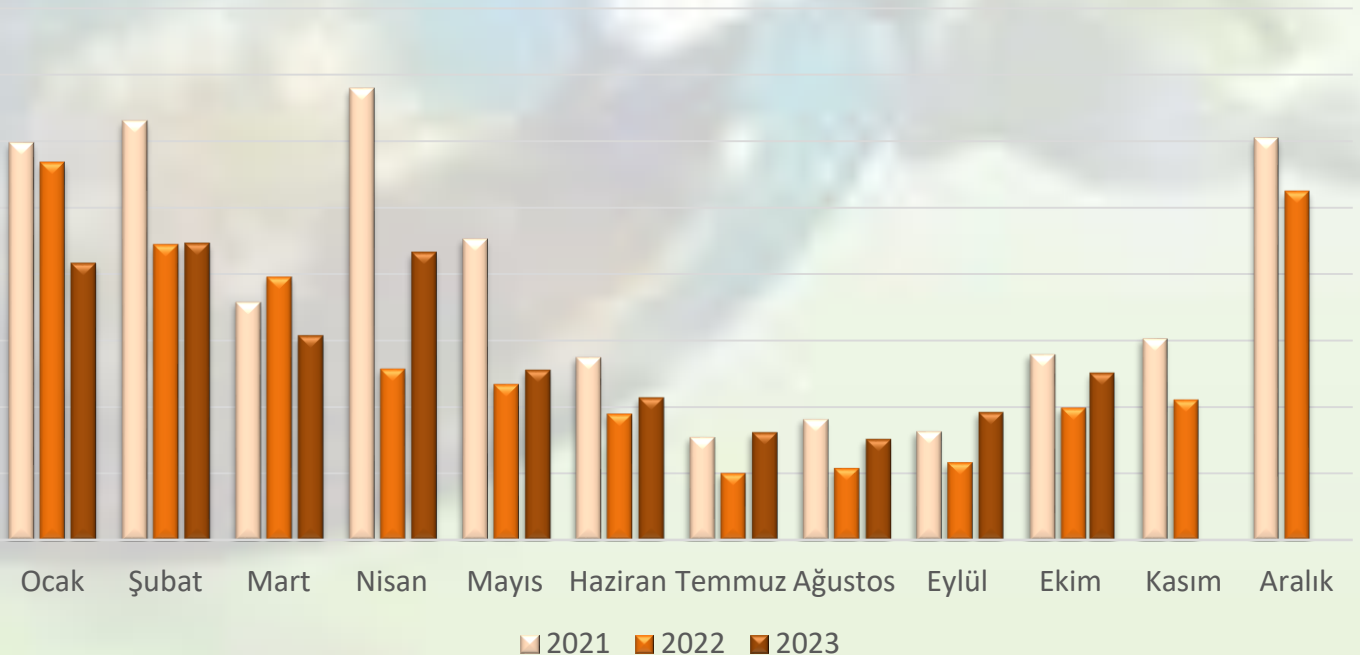
ENERGY-SAVING - LNG

LNG Consumption m3



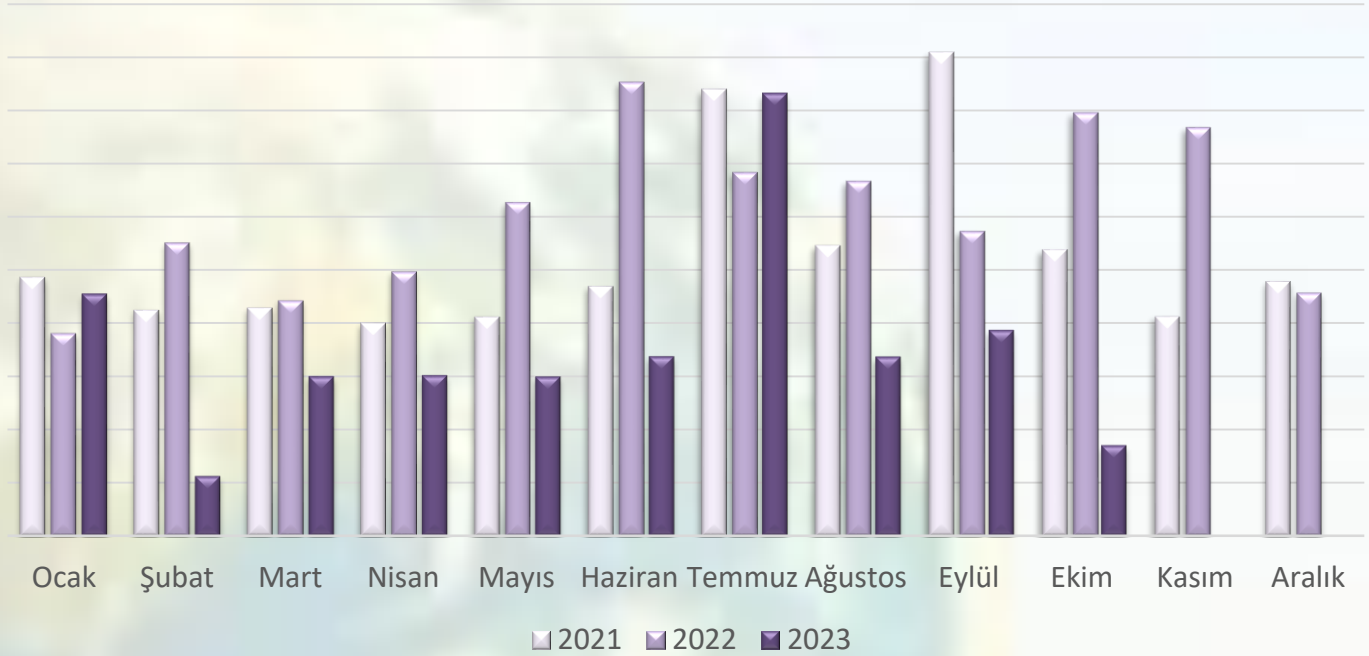
We aimed to save 1% LNG for 2023 compared to the previous year.

LNG Consumption per Capita m3



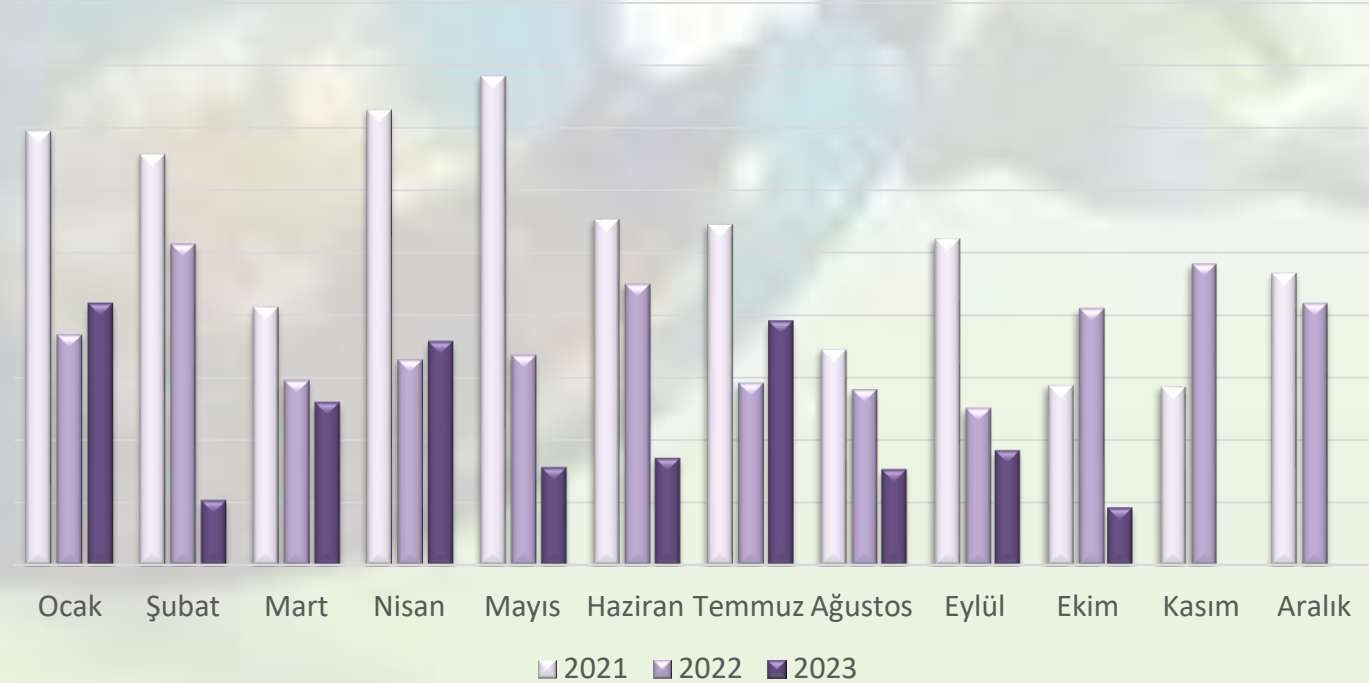
ENERGY-SAVING - FUEL

Fuel Consumption It.



We aimed to achieve 15% fuel savings for 2023 compared to the previous year. We saved 42% per person in 2022 compared to 2021. Based on the first 10 months of 2023, we achieved savings of 61% compared to last year.

Fuel Consumption per Capita It.



SAVING ON WATER



There are water-saving aerators in all rooms and common areas.



An economical 6 and 3 liter dual flush system is used in all WCs.



Water savings are achieved by choosing shower cabins instead of bathtubs.



When irrigating our garden, water losses are prevented by using drip and sprinkler systems.



SAVING ON WATER



Our employees are given training on water conservation. Our guests are informed about our savings practices.

Wastewater is connected to the sewer system in accordance with the discharge regulations.



Photocell taps and sensor urinals are used in all public areas.

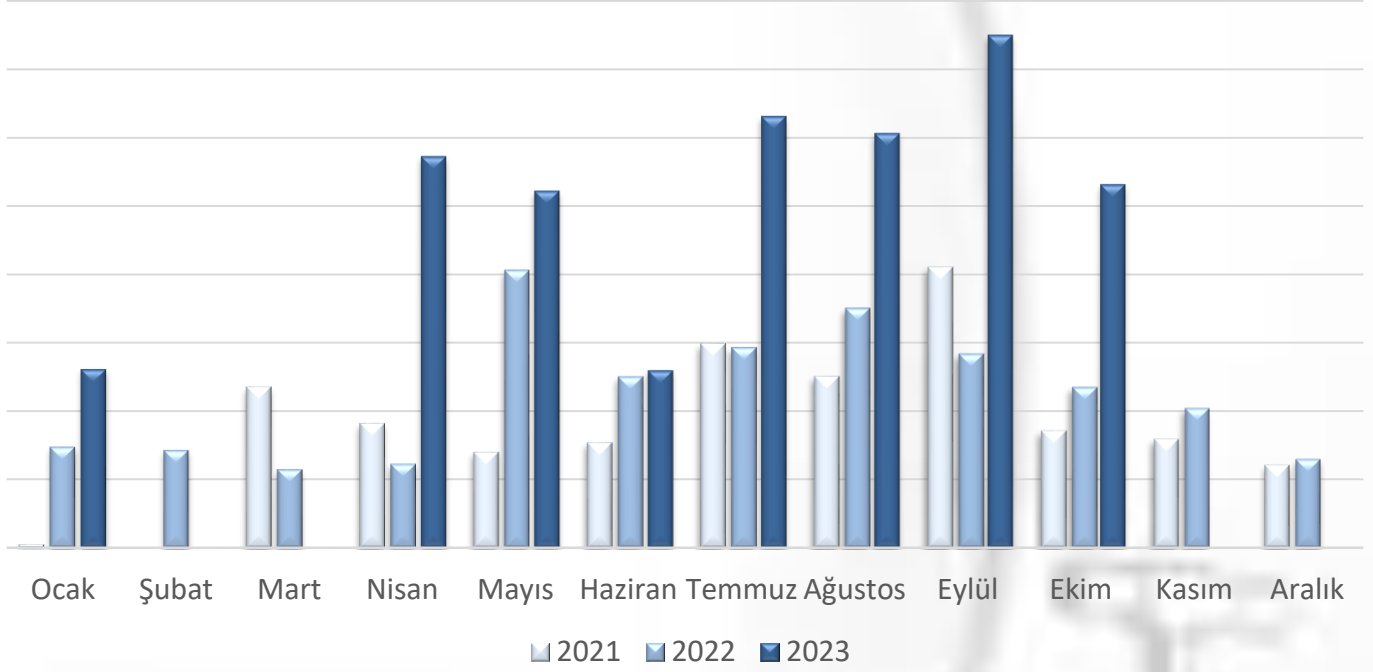
Knee-controlled timed systems are used in production areas.



Our monthly and annual water consumption is monitored and recorded.

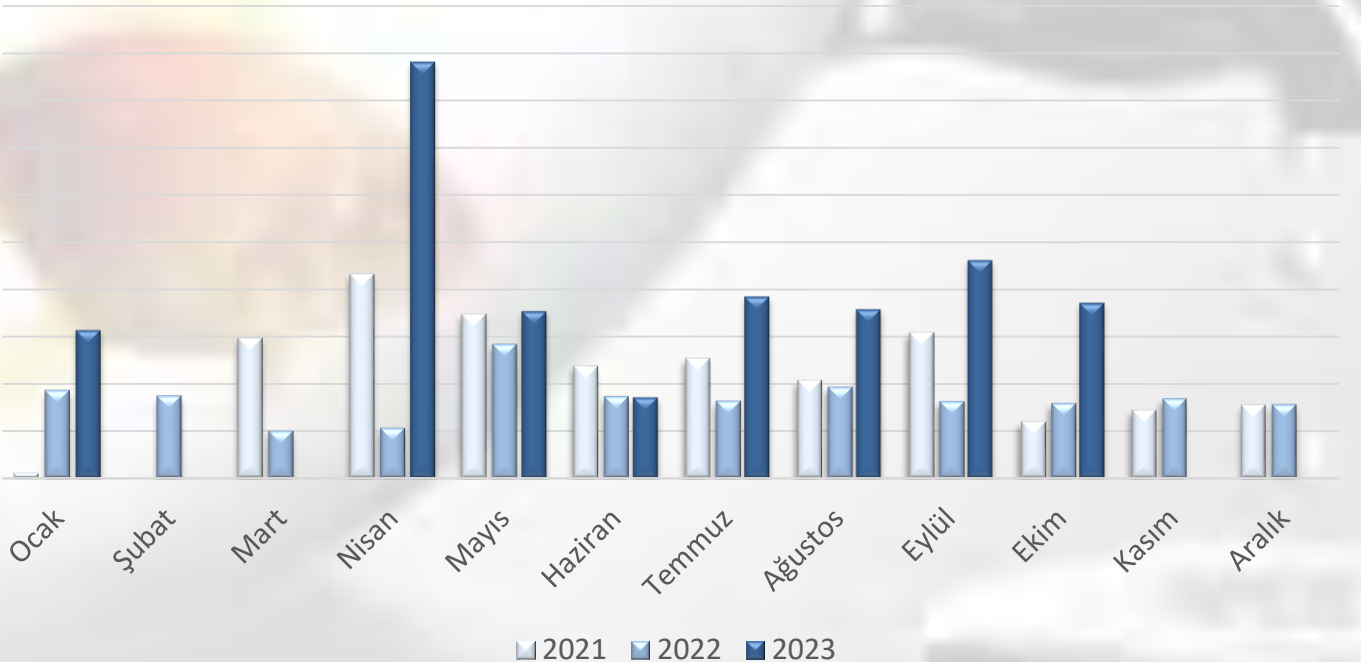
SAVING ON WATER

Su Tüketim It.



2023 yılı için bir önceki yıla oranla %5 su tasarrufu sağlamayı hedefledik. 2022 yılında 2021 yılına oranla kişi başı %24 tasarruf sağladık. 2023 yılı için %1 su tasarrufu yapmayı hedefledik.

Kişi Başı Su Tüketim It.



WASTE MANAGEMENT



We separate our waste at the source.



NO PLASTIC

We protect our resources by using reusable materials instead of disposable materials.



In order to reduce paper consumption, we conduct our correspondence via e-mail and use paper double-sided.

We encourage our guests and employees to participate in recycling programs.



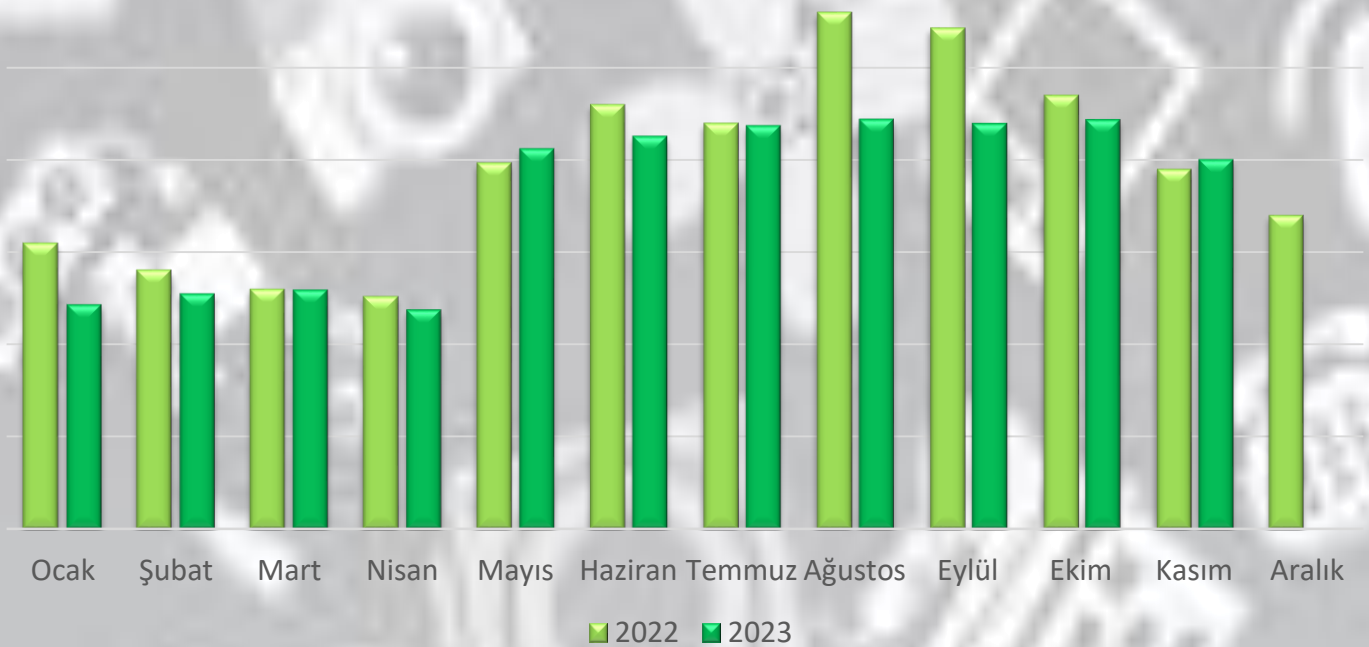
We reduce packaging waste by purchasing large packaged and concentrated products.



WASTE MANAGEMENT

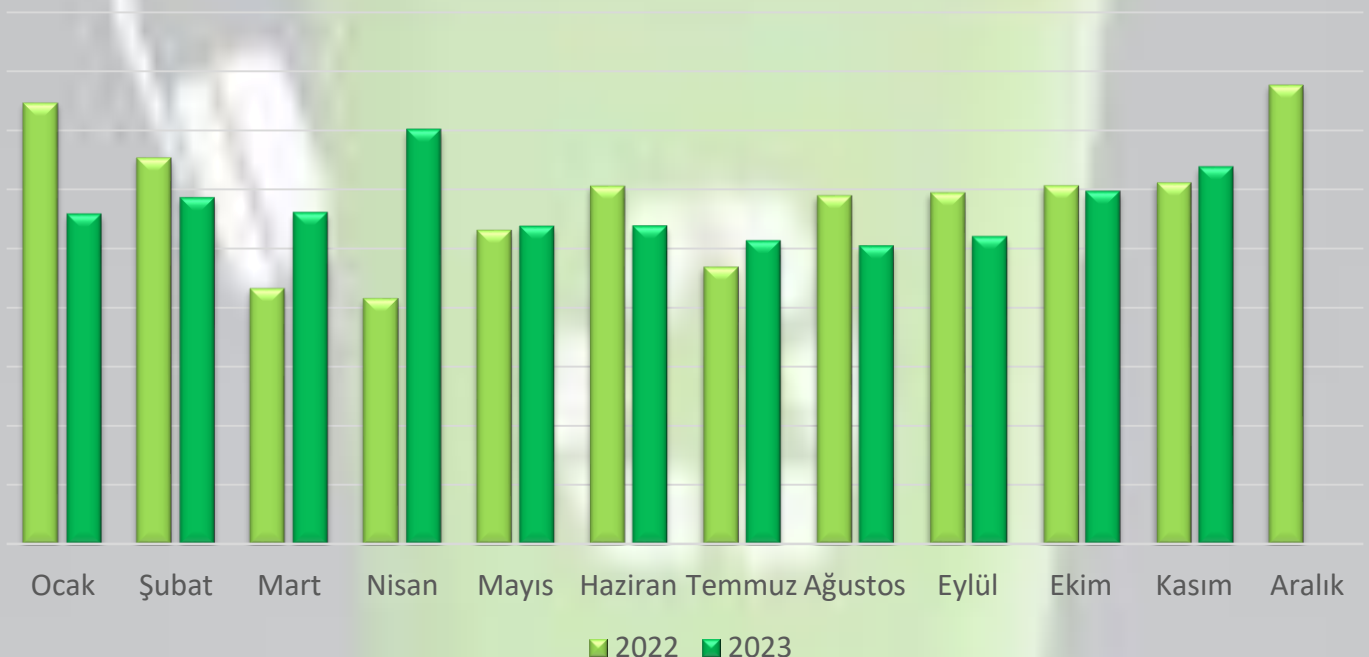


Solid Waste kg



We aimed to achieve 5% waste savings for 2023 compared to the previous year. Based on the first 11 months of 2022 and 2023, we achieved waste savings of 9.31%.

Solid Waste - Per Person



SOCIAL RESPONSIBILITY

If you would like to contribute to our nature and threatened species, you can donate by scanning the QR codes.



Scan me!



AA DERNEĐİ
AALANDIRMA ADINA ALIŐMA DERNEĐİ



WWF



Scan me!

OUR CERTIFICATES OF THANK YOU

TEŞEKKÜR BELGESİ

Sunprime C Lounge Hotel

06.02.2023 tarihinde ülkemizde yaşanan deprem felaketinde mağdur olan vatandaşlarımızı Alanya Koordinasyon Merkezimiz önderliğinde yürütülen çalışmalar kapsamında tesisinizde misafir ederek gösterdiğiniz dayanışma ve işbirliği için teşekkürlerimizi sunarız.

ALTID Yönetim Kurulu Adına

Burhan SİLİ

Başkan

Alanya Turizm & Tanıtma Vakfı
ALTAV
Alanya Tourism Promotion Foundation



TÜROFED
Türkiye Otelleri Federasyonu
Turkish Hotels Federation

**Our certificate of appreciation given by ALTID
for our assistance to earthquake victims who
suffered from the earthquake disaster in our
country.**

OUR CERTIFICATES OF THANK YOU



**Our certificate issued by the Tree Association for
our sapling donation..**

LOCAL CULTURE



Our Kandil Simit Offering – 26.01.2023

SOCIAL RESPONSIBILITY



**Photographs from the yoga activities held by the
«Only Sisters» Group in our hotel**

SOCIAL RESPONSIBILITY



Aid provided to our earthquake victims

SOCIAL RESPONSIBILITY



**Participation in the 12th Environmental Festival
– 07.06.2023**

SOCIAL RESPONSIBILITY



Blue Flag Award Ceremony – 07.07.2023

SUNPRIME C-LOUNGE

SOCIAL RESPONSIBILITY



Galipdere Beach Cleaning – 15.08.2023

SOCIAL RESPONSIBILITY



Alanya Tropical Fruit Festival – 06.10.2023

SOCIAL RESPONSIBILITY



Meeting of Sisters Only – 27.10.2023

SOCIAL RESPONSIBILITY



**We carried out beach cleaning with our employees on
16.12.2023.**

OUR TRAININGS



Motivasyon ve Takım Çalışması Eğitimimizden

OUR TRAININGS



Our collaboration with Alanya Social Services

OUR TRAININGS



Our Sustainable Tourism Education – 27.11.2023